

# How To Support Your Customers

You can provide software updates, answer technical questions, and offer reams of product information to anyone with a modem. 24 hours a day, 7 days a week, **unattended**.

All you need is a PC, XT, AT, or 386-compatible, and a Galacticom multi-user hardware/software package. And some phone lines.

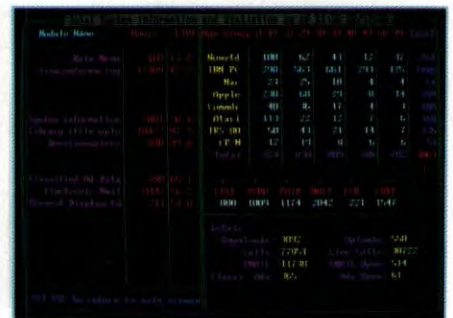
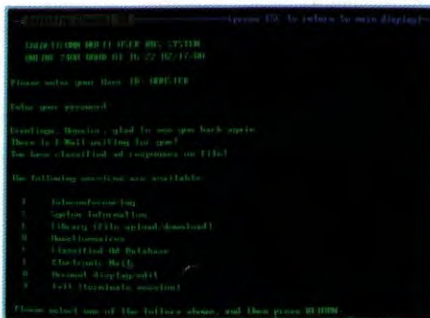
Our multi-user Bulletin Board System software, called **The Major BBS™**, supports your customers in several ways:

- Public Posting Areas . . . . . technical dialogue, bulletins, Q&A listings
- Private E-Mail . . . . . for one-on-one customer support
- Teleconferencing . . . . . online "seminars" and real-time interaction
- File Upload/Download . . . . . distribute updates, P.R. info, "app notes"
- Questionnaires . . . . . for market research, order forms, etc.



Our multi-modem PC cards are available in several configurations: 2 to 8 modems per card at 2400 baud, or 2 to 16 modems per card at 1200 baud. These are true single-slot cards with the modems built right in — no additional serial ports, power supplies, or external boxes of any kind are required.

The Major BBS can support **up to 64 users** simultaneously, although most of our customers operate small 4- to 16-user systems. The C source code is also available, so that you can modify the system to suit your specific requirements.



For \$59, we'll send you an introductory copy of *The Major BBS*, suitable for use with your standard COM1 and/or COM2 modems. This is a fully functional version for up to 2 simultaneous users (3 if you count the SysOp). You can upgrade later to a fully supported 4, 8, 16, 32, or 64-user version for only \$300 per doubling (plus modem hardware of course!).

Yes! Send me a copy of THE MAJOR BBS!

Name \_\_\_\_\_

Company \_\_\_\_\_

Address \_\_\_\_\_

City \_\_\_\_\_ State \_\_\_\_\_ Zip \_\_\_\_\_

Signature \_\_\_\_\_

(Florida orders add \$3.54 tax. Overseas orders add U.S. \$25 for shipping.)

\$59.00 check enclosed

\$67.30 for C.O.D.

\$65.15 for credit card:

VISA  MC  AMEX / Exp. Date \_\_\_\_\_

\_\_\_\_\_

# GALACTICOMM

Galacticomm, Inc. 4101 S.W. 47 Ave.  
Suite 101, Fort Lauderdale, FL 33314

Modem: (305) 583-7808  
Fax: (305) 583-7846  
Voice: (305) 583-5990

## HARDWARE SPECIFICATIONS

|  | Model 4       | Model 16      | Model 2408    |
|--|---------------|---------------|---------------|
| Maximum # of modems per card ...       | 4             | 16            | 8             |
| Baud rates (auto-selecting) .....      | 3/1200        | 3/1200        | 3/12/2400     |
| Length .....                           | 5-3/16"       | 13-1/8"       | 13-1/8"       |
| Height .....                           | 4-3/16"       | 4-3/16"       | 4-3/16"       |
| Thickness .....                        | 3/4"          | 3/4"          | 3/4"          |
| +5V max current (per modem) .....      | 250 mA        | 250 mA        | 190 mA        |
| -5V max current (per modem) .....      | -25 mA        | -25 mA        | -20 mA        |
| R/W access time .....                  | 250 ns        | 250 ns        | 150 ns        |
| Maximum PC/AT-style speed .....        | 16 MHz        | 16 MHz        | (no limit)    |
| Maximum PC/XT-style speed .....        | 12 MHz        | 12 MHz        | (no limit)    |
| Maximum "zero-wait-state" speed ..     | 10 MHz        | 10 MHz        | (no limit)    |
| Operating temperature .....            | 0° to 50° C   | 0° to 50° C   | 0° to 50° C   |
| Storage temperature .....              | -25° to 85° C | -25° to 85° C | -25° to 85° C |
| Telephone line interface (each) .....  | RJ-11 (male)  | RJ-11 (male)  | RJ-11 (male)  |
| AC Impedance .....                     | 600 ohms      | 600 ohms      | 600 ohms      |
| Protection .....                       | FCC Part 68   | FCC Part 68   | FCC Part 68   |
| Transmit Level .....                   | -9 dBm (max)  | -9 dBm (max)  | -9 dBm (max)  |
| Carrier Detect Sensitivity (on) .....  | -43 dBm (min) | -43 dBm (min) | -45 dBm (nom) |
| Carrier Detect Sensitivity (off) ..... | -48 dBm (min) | -48 dBm (min) | -48 dBm (nom) |
| DAA Loop Current .....                 | 20 mA (min)   | 20 mA (min)   | 20 mA (min)   |
| 300 bps protocol .....                 | Bell 103A     | Bell 103A     | 103A / V.21   |
| 1200 bps protocol .....                | Bell 212A     | Bell 212A     | 212A / V.22   |
| 2400 bps protocol .....                | —             | —             | V.22 bis      |
| # of I/O ports (10-bit decode) .....   | 2             | 2             | 1             |
| # of I/O ports (16-bit decode) .....   | 8             | 32            | 64            |
| I/O addr DIP switch select range ....  | 200H to 3FEH  | 200H to 3FEH  | 200H to 3FFH  |
| Type of I/O slot accepted .....        | 8/16/32       | 8-bit only    | 8 or 16-bit   |
| Port interface model .....             | 8251A UART    | 8251A UART    | SCC2698       |
| Command set supported .....            | XECOM 1201    | XECOM 1201    | Hayes         |

## BBS SOFTWARE SPECIFICATIONS

|   |  |
|---|--|
| RAM requirement .....                   | 512K (640K if more than 16 users)          |
| Extended/expanded RAM requirement ..    | none                                       |
| Hard disk requirement .....             | 20MB (minimum)                             |
| Operating system requirement .....      | MS-DOS/PC-DOS 3.0, 3.1, 3.2, 3.3, and up   |
| LAN compatibility (none required) ..... | Novell, Corvus, 10-Net                     |
| C source compatibility .....            | Turbo 1.5, Microsoft 4.0/5.0, Lattice 2.14 |
| Btrieve compatibility .....             | V4.01 and up (single-CPU version)          |
| Executable file size .....              | 200K without overlays (subject to change)  |

### User Account Management

|                                   |  |
|-----------------------------------|--|
| Max number of user accounts ..... | 8,000,000  |
| Selectable database fields .....  | screen width, name, company, address (2 lines), phone no., system type, age, sex |
| Maximum User-ID length .....      | 9 characters   |
| Maximum password length .....     | 9 characters   |
| Max user-time "meterable" .....   | 2 billion seconds (63 years)   |

## SIGs (Special Interest Groups)

|                                       |   |
|---------------------------------------|---|
| Max # of SIGs .....                   | 200   |
| SIG user main menu options .....      | Read/write bulletins, upload/download files, teleconference, select another SIG |
| Search strategies supported .....     | keyword search, scan, title list  |
| Security levels (per user per SIG) .. | invisible, read, download, write, upload, Co-Op, SIG-Op, SYSOP                  |
| "Quicksan" SIGs (per user) .....      | 20  |
| Message threading .....               | forward or backward, by topic   |
| Tags maintained per message .....     | message no., date, time, reply count, "reply-to", "forwarded-by", "cc:-of"      |
| Max message topic length .....        | 40 bytes (plus 32 byte aux. topic)  |
| Max message text length .....         | 1920 bytes  |
| Max file size .....                   | up to size of disk  |
| Max # of messages + files at once ..  | 2,000,000   |
| Max # of messages + files ever .....  | 4 billion   |
| Upload/download protocols .....       | XMODEM, XMODEM-CRC, YMODEM, ASCII (paginated or non-stop)                       |
| Special features .....                | novice/expert modes, CD-ROM compatible, context-sensitive help, keyword memory  |

## Electronic Mail

|                                    |  |
|------------------------------------|--|
| E-Mail main menu options .....     | Read/write/modify/erase messages   |
| Tags maintained per message .....  | message no., date, time, RRR, ATT, "reply-to", "forwarded-by", "cc:-of"  |
| Maximum message topic length ....  | 40 bytes (plus 32 byte aux. topic)                                       |
| Maximum message text length .....  | 1920 bytes   |
| Maximum "attachment" file size ... | up to size of disk   |
| Upload/download protocols .....    | XMODEM, XMODEM-CRC, YMODEM, ASCII (paginated or non-stop)                |
| Special features .....             | carbon copies, forwarding, auto-purge, 2-way auto-alert, return-receipts |

## Teleconference

|                                     |  |
|-------------------------------------|--|
| Number of "CB" channels .....       | 65,535   |
| Max length of user input line ..... | 255 bytes (plus CR)  |
| User screen display format .....    | transcript   |
| Max concurrent users/channel .....  | 64   |
| Special features .....              | "chat", "page", "whisper", activity-scan, list/unlist, moderators, "squelch" |

## Questionnaires

|                                    |   |
|------------------------------------|---|
| Max no. of questionnaires .....    | 10  |
| Max no. of questions in each ..... | 20  |
| Max length of each question .....  | 1920 bytes  |
| Max length per answer .....        | 127 bytes   |
| Special features .....             | results display option, offline report generator with duplicate elimination |

## User Registry

|                                    |   |
|------------------------------------|---|
| Max no. of registered users .....  | 4,000,000   |
| Max no. of fields per user .....   | 30  |
| Max overall storage per user ..... | 870 bytes   |
| Default templates supplied .....   | Resumé, Business Interests, Dating Game   |
| Special features .....             | directory scan, detailed lookup, auto-alert if not registered, profanity filter |

The Major BBS is a trademark of Galacticom, Inc.  
 PC, XT, AT, and PC-DOS are trademarks of International Business Machines Corp.  
 Hayes is a registered trademark of Hayes Microcomputer Products, Inc.  
 XECOM is a trademark of XECOM, Inc.  
 Novell is a trademark of Novell, Inc.  
 Corvus is a trademark of Corvus Systems, Inc.  
 10-Net is a registered trademark of Digital Communications Associates, Inc.  
 Turbo C is a trademark of Borland International, Inc.  
 Microsoft C and MS-DOS are trademarks of Microsoft Corp.  
 Lattice C is a trademark of Lattice, Inc.  
 Btrieve is a trademark of Softcraft, Inc.

ALL SPECIFICATIONS SUBJECT TO CHANGE WITHOUT NOTICE