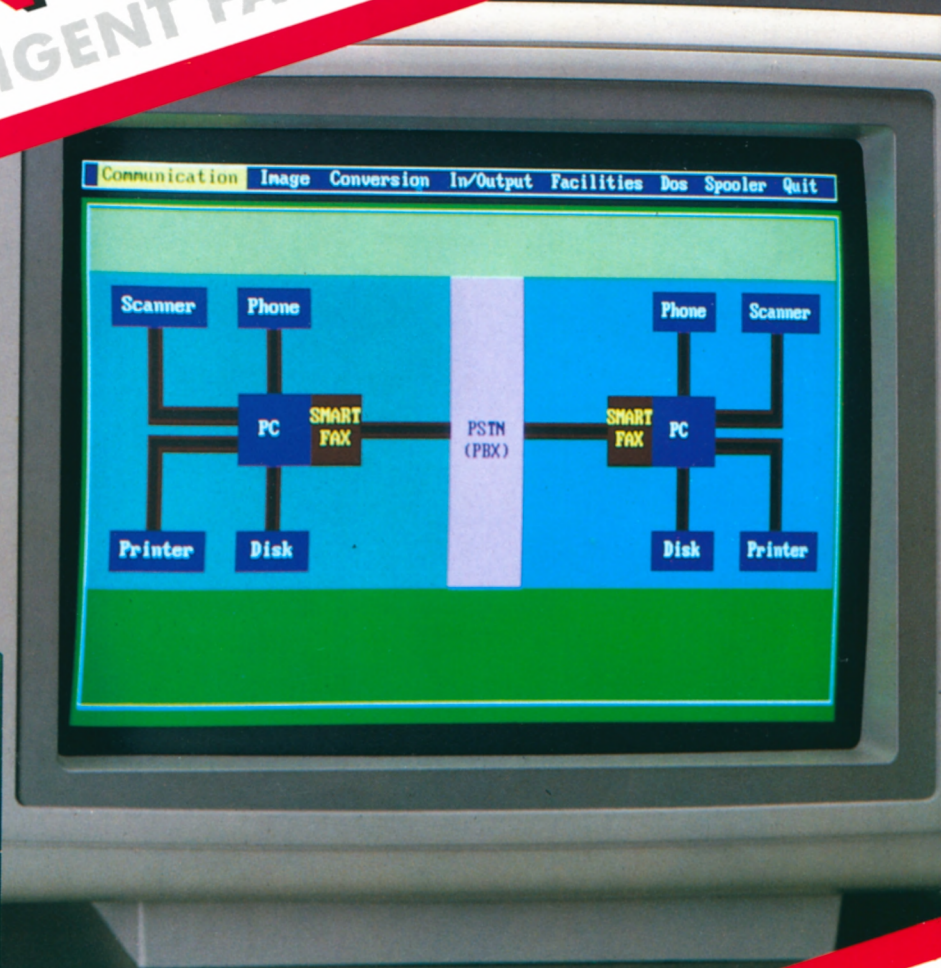
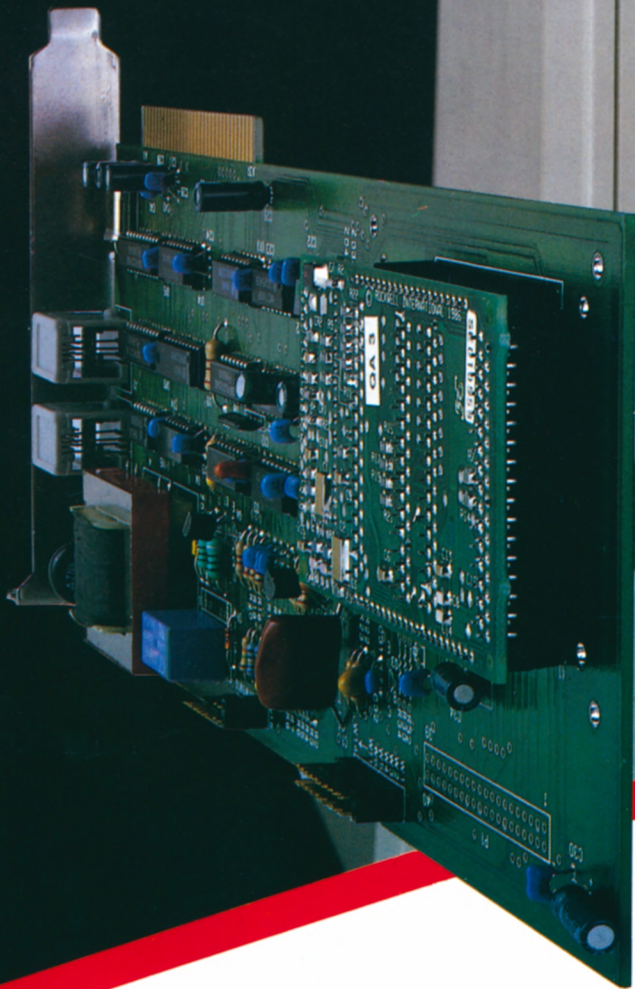


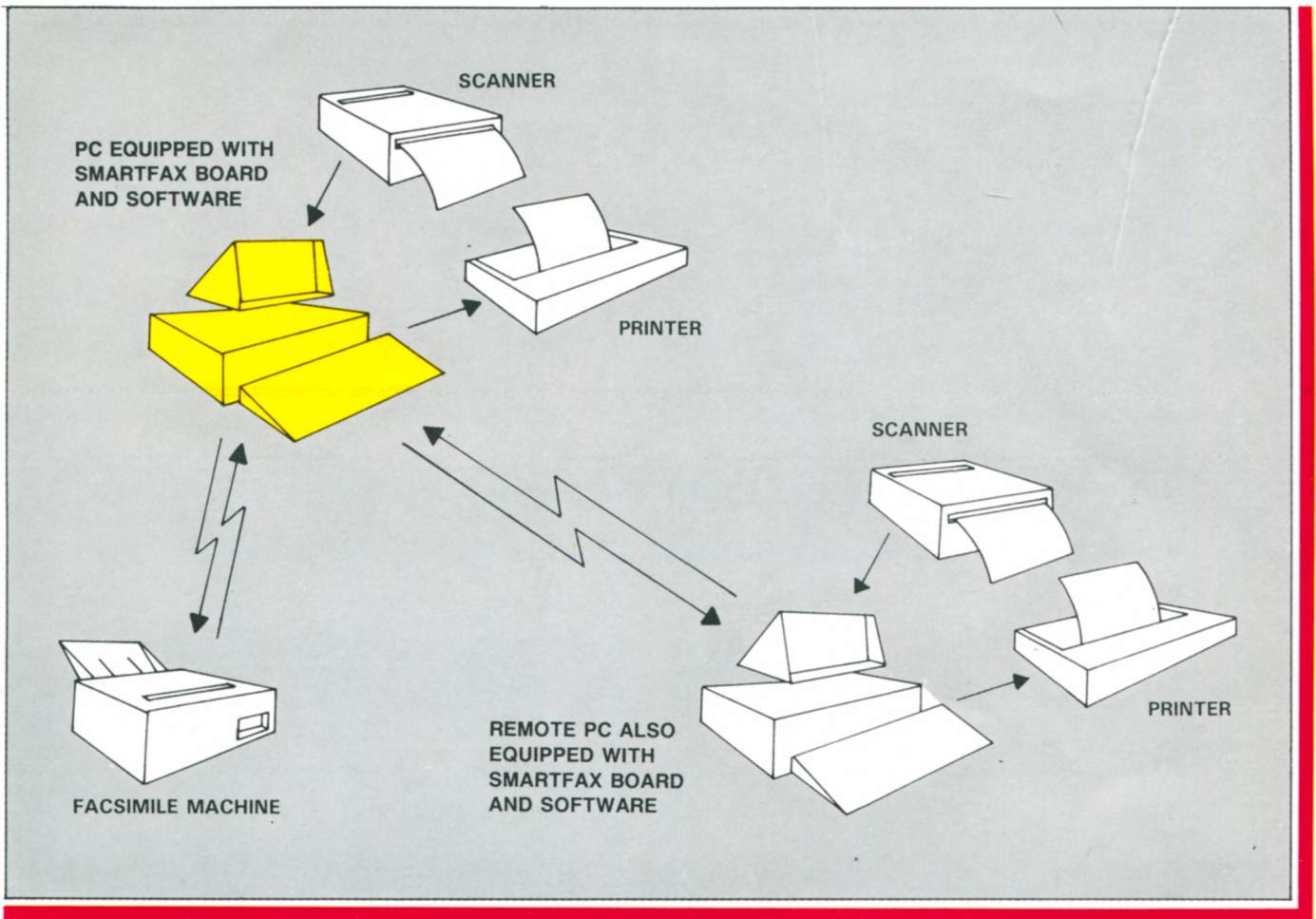
ADTECH

SMARTFAX

PC BASED INTELLIGENT FACSIMILE SYSTEM



- RECEIVING IN BACKGROUND
- TEXT + GRAPHICS MESSAGE EDITING
- PRESCHEDULING + BROADCASTING
- SPEED DIALING, USAGE STATISTICS,
- WORLD TIME AND AREA CODE LOOK-UP
- WORD PROCESSOR AND GRAPHICS INTERFACES
- SCANNER AND PRINTER INTERFACES



SMARTFAX is a PC based intelligent facsimile system, consisting of a software package and a board that fits into any slot of an IBM PC, XT, AT or compatible.

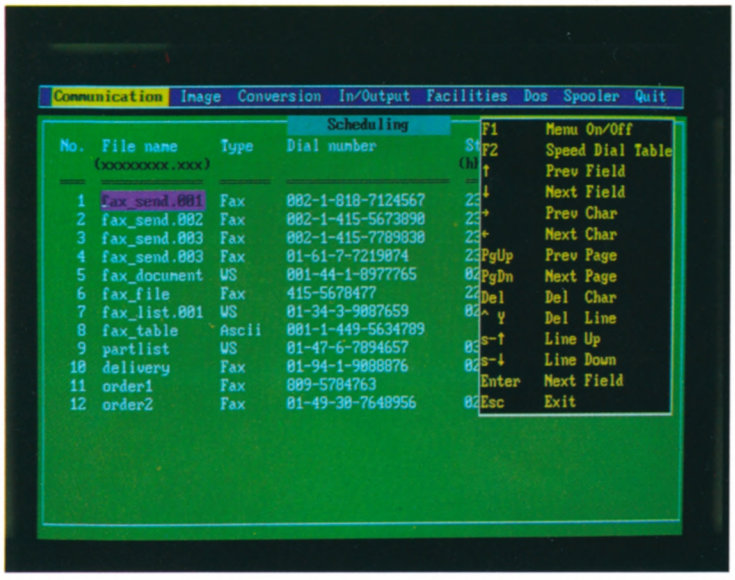
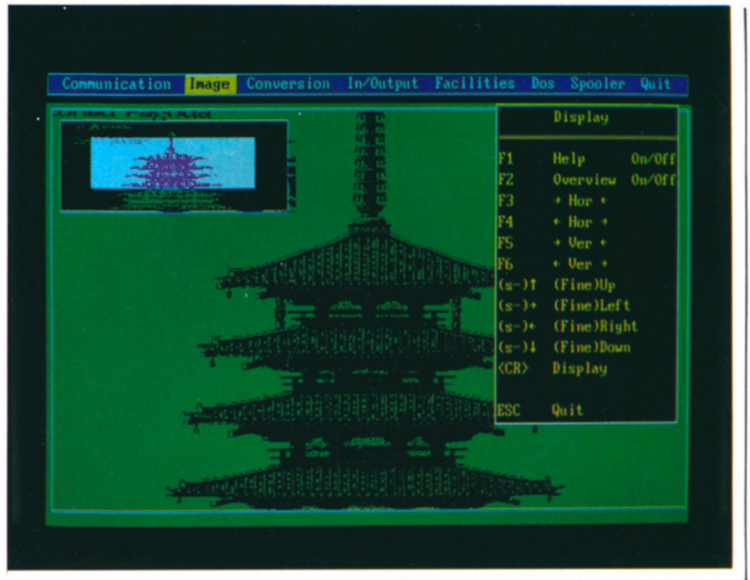
Designed to communicate with CCITT G3 (Group III) machines, the SMARTFAX board implements CCITT T. 4 and T. 30 recommendations. It operates at 2400, 4800, 7200 and 9600 BPS. With SMARTFAX, PC users can now send messages (including texts, drawings, pictures, graphics, etc.) to and from any CCITT G3 facsimile machine or to and from any other PC based facsimile system. Transmission can be made from scanner or disk, and received

messages can be stored in disk space or directly printed to hardcopy.

The heart of SMARTFAX is the software package; it includes, message editing, scheduling and broadcasting, convenient user facilities, and the ability to receive messages in background. All of these features combine to give you capabilities never before available in a facsimile machine. Additionally, extensive input/output supports and the ability to interface with other popular software packages make SMARTFAX one of the most powerful user friendly FAX packages on the market today.

Message Editing-SMARTFAX provides text and image capabilities to allow FAX messages to be displayed, composed, and edited on screen. Features such as enlarge, reduce, rotate, partial copy, save, blank, cut-and-paste, insert text, and change font size are integrated into an easy-to-use package utilizing pull-down menus.

Enlargement feature, with associated pull-down menu is pictured at right.

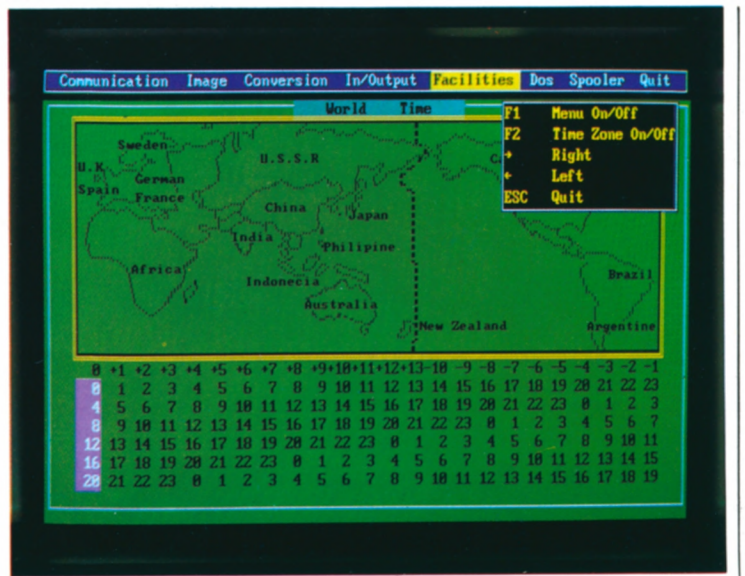


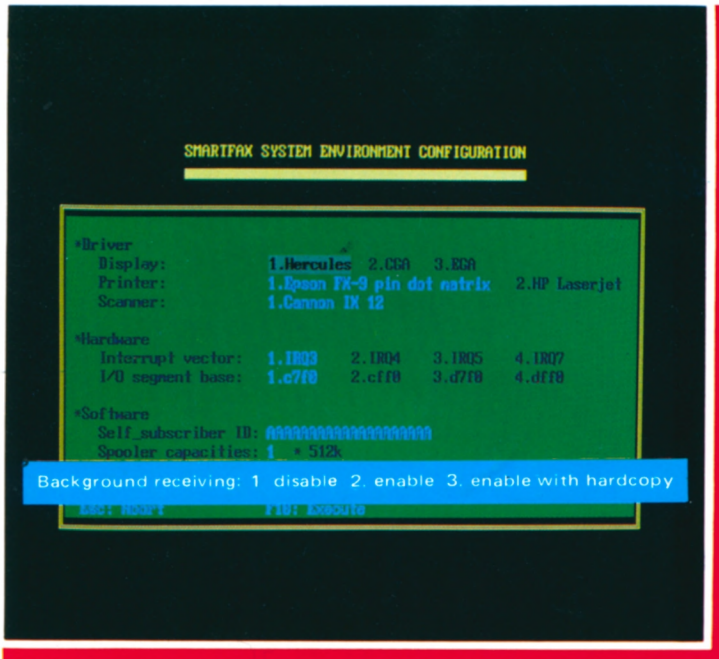
Message Scheduling-allows unattended message sending. SMARTFAX can be programmed in advance to broadcast a single message to multiple locations, and/or send multiple messages to multiple locations at different times to maximize the user's time and take advantage of discount phone rates.

Example of file scheduling is pictured at left.

User Facilities-SMARTFAX is a user-oriented system. Features included to make the user's tasks much easier are area code look-up, detailed usage statistics, and speed dialing. SMARTFAX also automatically records FAX files that have been sent and received, and keeps track of all incoming and outgoing transmissions.

Example of world time look-up is pictured at right.





Background Receiving-most important of all, SMARTFAX is able to receive messages in background. No longer must the computer be dedicated to only receiving FAX messages. The user can run applications or continue normal computer operations without worrying about receiving FAX messages. Incoming messages can be stored in files and/or printed as they are received.

Installation of background operation is pictured at left.

I/O Support-SMARTFAX offers various scanner interfaces to input documents and graphic images, and various printer interfaces including the Epson FX-80 and HP Laserjet printer to allow a wide range of high quality output. SMARTFAX also supports Hercules graphic, IBM color graphic and IBM enhanced graphic adapters allowing a wide range of display devices.

Software Interface-SMARTFAX interfaces with popular word processors like Wordstar and Wordstar 2000, and with graphics packages such as DR. Halo and PC paintbrush. SMARTFAX can convert files from these packages to SMARTFAX files for transmission to a facsimile machine and/or another PC based facsimile system.

SPECIFICATIONS

COMPATIBILITY: CCITT Group III facsimile equipment

CODING SCHEME: Modified Huffman

TRANSMISSION SPEED: 9,600/7,200/4,800/2,400 BPS

RESOLUTION: Horizontal 203 LPI
Vertical 98 or 196 LPI

NETWORK INTERFACE: RJ-11 (x2) modular jack to PSTN or PBX
Tone or pulse dialing

HOST COMPUTER: IBM PC/XT/AT or compatible

MEMORY REQUIRED: 640KB RAM

DISK STORAGE REQUIRED: 2MB minimum

DISPLAY ADAPTER SUPPORTED: CGA, EGA, HERCULES or compatible

I/O DEVICES SUPPORTED: scanner, dot matrix printer and laser printer

BOARD DIMENSION: 273mmx102mm



American Data Technology, Inc.

44 W. Bellevue Drive, Suite 6, Pasadena, Ca.91105, U. S. A.

Telephone: (818) 578-1339 Telex: 9103803958

Easylink Mailbox: 62842087 FAX: (818) 578-1264

Design and Specifications
Subject to Change
Without Notice

IBM, PC/XT/AT, are
registered trademarks
of International Business
Machines Corporation